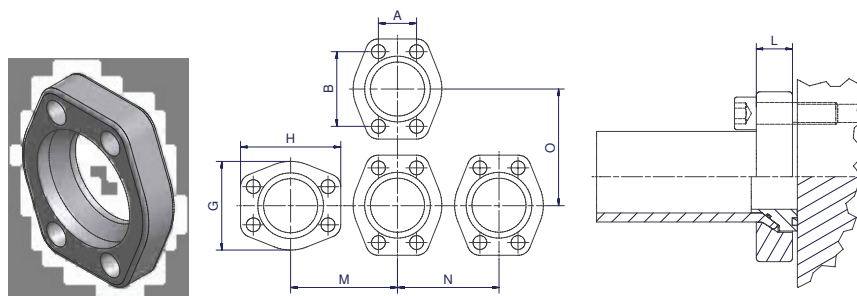


**F37 – Flare flange | SAE 3000/ISO 6162-1 footprint**

SAE 3000/ISO 6162-1



**Parflange F37 flange dimensions**

Size Inch	Flange Order code	A	B	G	H	M	N	O	L	Weight (Steel) kg/1 piece	W.P. bar
1/2	<b>F37-308-CFX</b>	17.5	38.1	46	54.0	52	49	56	19	0.20	350
3/4	<b>F37-312-CFX</b>	22.3	47.6	52	65.0	61	55	68	20	0.25	350
1	<b>F37-316-CFX</b>	26.2	52.4	60	71.0	67	61	72	24	0.30	350
1 1/4	<b>F37-320-CFX</b>	30.2	58.7	68	79.0	78	75	82	22	0.46	280
1 1/2	<b>F37-324-CFX</b>	35.7	69.9	78	93.0	90	85	96	25	0.68	280
2	<b>F37-332-CFX</b>	42.9	77.8	97	101.5	102	99	104	33	0.98	280
2 1/2	<b>F37-340-CFX</b>	50.8	88.9	109	115.5	114	111	117	44	1.63	210
3	<b>F37-348-CFX</b>	61.9	106.4	132	135.0	136	133	137	50	2.79	210

**Parflange F37 flange dimensions**

Threaded flanges

Size Inch	Flange Order code	A	B	G	H	M	N	O	L	Weight (Steel) kg/1 piece	W.P. bar
3/4	<b>F37-312T-CFX*</b>	22.3	47.6	52	65.0	61	55	68	20	0.25	350
1	<b>F37-316T-CFX*</b>	26.2	52.4	60	71.0	67	61	72	24	0.30	350
1 1/4	<b>F37-320T-CFX*</b>	30.2	58.7	68	79.0	78	75	82	22	0.46	280
1 1/2	<b>F37-324T-CFX*</b>	35.7	69.9	78	93.0	90	85	96	25	0.68	280
2	<b>F37-332T-CFX*</b>	42.9	77.8	97	101.5	102	99	104	33	0.98	280
2 1/2	<b>F37-340T-CFX*</b>	50.8	88.9	109	115.5	114	111	117	44	1.63	210

Please change suffixes according to material/surface required

Order code suffixes			
Material	Suffix surface and material	Example	Comments
Steel, zinc plated, Cr(VI)-free	CF	F37-320-CFX	
Stainless steel	SS	F37-320-SSX	
Galvanized hot dip zinc	TZN	F37-320-TZNX	on request

